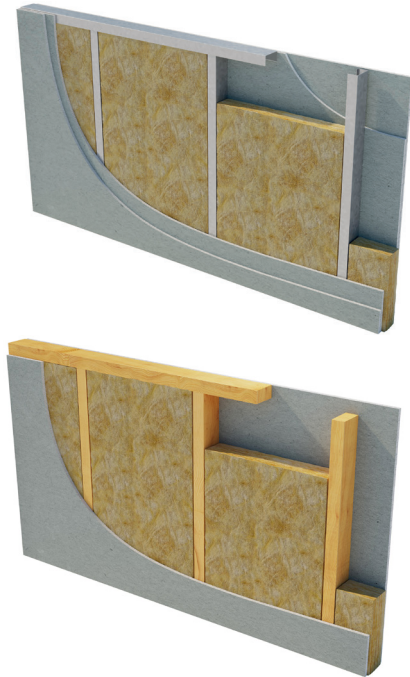


Acoustic Partition Roll (APR).

November 2024 | Data Sheet



Description.

Superglass Acoustic Partition Roll (APR) is a non-combustible glass mineral wool insulation roll. The roll is supplied at 1200mm & 2x600mm widths to allow friction fitting between common stud/joist spacings, minimising gaps at joints and reducing on-site cutting & waste.

Application.

Superglass Acoustic Partition Roll (APR) is designed to provide both thermal and acoustic insulation for various applications, including:

- Internal walls and floors
- Timber and metal stud partitions
- Separating walls and floors
- Drylining system

Performance.

Density:

25mm is manufactured at a nominal density of 18kg/m³.

40mm and 50mm is manufactured at a nominal density of 16kg/m³.

Thermal Conductivity:

25mm has a declared thermal conductivity (lambda (λ) value) of 0.036W/mK. 40mm

and 50mm has a declared thermal conductivity (lambda (λ) value) of 0.038W/mK.

Fire Classification:

Deemed non-combustible with a fire classification of Euroclass A1 (the highest possible rating) when tested to BS EN 13501-1 Reaction to Fire.



Typical applications:
Internal walls and floors.



Acoustic
Insulation



Thermal
Insulation



Non-
combustible



Recycled
Glass Content

Intelligent Environments
Superglass

superglass.co.uk

Acoustic Partition Roll (APR).

Technical Characteristics.

Product Specification.

Thickness (mm)	Length (m)	Width (mm)	Roll per pack	Pack Area (m ²)	Packs per pallet	Thermal Conductivity (W/mK)	Thermal Resistance (m ² K/W)	Product Code
25	11.25	1200	2	27.000	24	0.036	0.65	2144464
25	11.25	2x600	4	27.000	24	0.036	0.65	2144465
40	9.00	1200	2	21.600	24	0.038	1.05	2144529
50	6.50	1200	2	15.600	24	0.038	1.30	2144448
50	6.50	2x600	4	15.600	24	0.038	1.30	2144466

Please note that all dimensions are nominal.

Additional Information.

Vapour Resistivity.

The product has a nominal vapour resistivity of 5 MNs/gm.

Environmental credentials.

- Our products and their pallets are wrapped in low-density polyethylene (LDPE4) plastic, which contains a minimum 30% recycled material and is fully recyclable. Before recycling, please consult your local authority for guidance.
- ISO 14001 - Environmental Management Systems (EMS) certified. Certificate number: EMS 646508.
- Contains no ozone-depleting substances or greenhouse gases. For more information, please refer to the Environmental Product Declaration (EPD).
- Manufactured from up to 84% recycled glass.
- Generic BRE Green Guide Rating of A+.

Standards and Approvals.

Manufactured in accordance with:

- BS EN 13162:2012(+A1:2015) Thermal insulation products for buildings - Factory made mineral wool (MW) products.
- BS EN 13172: 2012 Thermal insulation products - Evaluation of conformity.
- BS EN ISO 9001 - Quality Management Systems (QMS). Certificate number: FM 02264.

Certifications.

- UKCA certified to BS EN 13162:2012+A1:2015. Certificate number: 0086 CPR 469699.
- CE marked to EN 13162:2012+A1:2015. Certificate number: 0751-CPR-399.0-01.

A copy of the product Declaration of Performance (DoP) can be downloaded from the Superglass website.

Handling & Storage.

The product should be stored properly and handled in such a way as to ensure that the product remains clean and undamaged.

The product is supplied compression packed in polythene to provide short term protection only. For long term protection, the product must be stored indoors, or under a waterproof covering and off the ground to protect from weather damage. The product should not be left permanently exposed to the elements.

All Superglass products are non-hygroscopic, will not rot, degrade, or sustain vermin and will not encourage the growth of mould, bacteria, or fungi.

Intelligent Environments
Superglass

UK
CA

CE



Superglass Insulation Ltd | Thistle Industrial Estate | Kerse Road | Stirling | FK7 7QQ | UK

APR004
November 2024

Technical

Hotline: 0808 1645 134

Email: technical.stirling@etexgroup.com

Customer Services

Tel: 01786 451170

Email: customerservice.stirling@etexgroup.com

Social

[superglass_uk](#)

[superglassuk/](#)

[superglassinsulationuk](#)