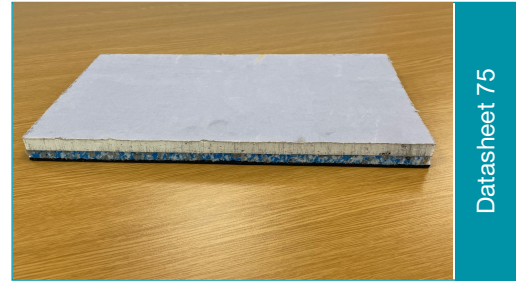
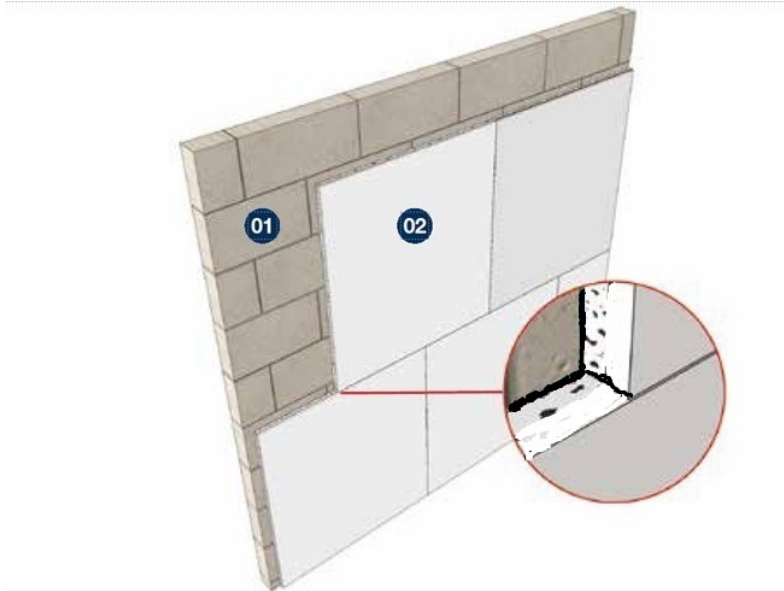


Acoustic Silent Board Eco

ACOUSTIC WALL LINER



Datasheet 75



01 100mm Lightweight Block

02 JCW Acoustic Silent Board Eco

All board joints may be sealed (if required) with JCW Acoustic Sealant. At wall, floor & ceiling edges leave a 5mm gap and fully fill with JCW Acoustic Sealant

Use mechanical frame fixings on brick/block walls and screw fixings on stud work

Product Code: 1215

Acoustic overlay improvement board for new and existing walls

Acoustic plasterboard laminated to an acoustic resilient layer

- Can be fitted directly to existing brick, block and stud walls.
- Simple to fit
- Could be used as a remedial solution for sound test failures
- Plasterboard surface ready for skimming and decoration

Sheet Size: 24.5mm x 1200mm x 1200mm (1.44 m²) **Weight:** 22.9 kgs

Typical Airbourne Improvement on construction shown of up to 7dB

Method of Compliance

Approved Document E/ Section 5 Scotland

Ancillary Products

- 1027 JCW Acoustic Sealant (310ml)
- Various JCW Fire & Acoustic Socket Box Inserts
- 1491 JCW Screw Fixings

Domestic Dwellings | Offices | Hotels | Conference Centres | Leisure Centres | Schools | Restaurants | Showrooms



Unit 32-34 Waters Meeting Development
Britannia Way, Bolton, BL2 2HH

Sales helpline **01204 548400**
8.30am - 5.00pm Monday to Friday

sales@acoustic-supplies.com
www.acoustic-supplies.com

Tools/Accessories required

- Sharp trimming knife
- Handsaw
- Frame fixings for brick & block OR self-countersinking screws for timber
- JCW Acoustic Sealant

Installation Notes

1. All skirting and coving is to be removed.
2. Walls should be flat and/or prepared to accept the JCW Silent Board Eco.
3. The first JCW Silent Board Eco is fitted in the LH or RH corner using a 5mm spacer to isolate the JCW Silent Board from the surrounding floor, ceiling and walls. These gaps (along with any excess gaps between the boards) should then be fully filled with JCW Acoustic Sealant once the final boards are in place.
4. JCW Silent Board Eco is mechanically fixed to the wall using 9 fixings per board; Solid brick or block walls use tap in screw Frame Fixings. On Stud walls use suitable self-countersinking screws. Note; DO NOT over tighten the screw fixings as this will overly compress the Acoustic Backing and reduce the performance, additionally, the screws may pull through the plasterboard surface.
5. Once the first JCW Silent Board Eco is fitted in position, continue along the bottom row filling any gaps between the boards with JCW Acoustic Sealant. Plan the bottom row to allow for cuts and staggered joints on all of the rows above.
6. JCW Silent Board Eco can be plaster skimmed.
7. For ease of installation 2000 guage building paper can be used (subject to quality of finish).

Disclaimer: The product and installation information contained in this Data Sheet and General Installation Guide is to the best of our knowledge correct. Please contact us direct, prior to starting works, for the latest information to enable confirmation of the specification.

Domestic Dwellings | Offices | Hotels | Conference Centres | Leisure Centres | Schools | Restaurants | Showrooms



Unit 32-34 Waters Meeting Development
Britannia Way, Bolton, BL2 2HH

Sales helpline **01204 548400**
8.30am - 5.00pm Monday to Friday

sales@acoustic-supplies.com
www.acoustic-supplies.com