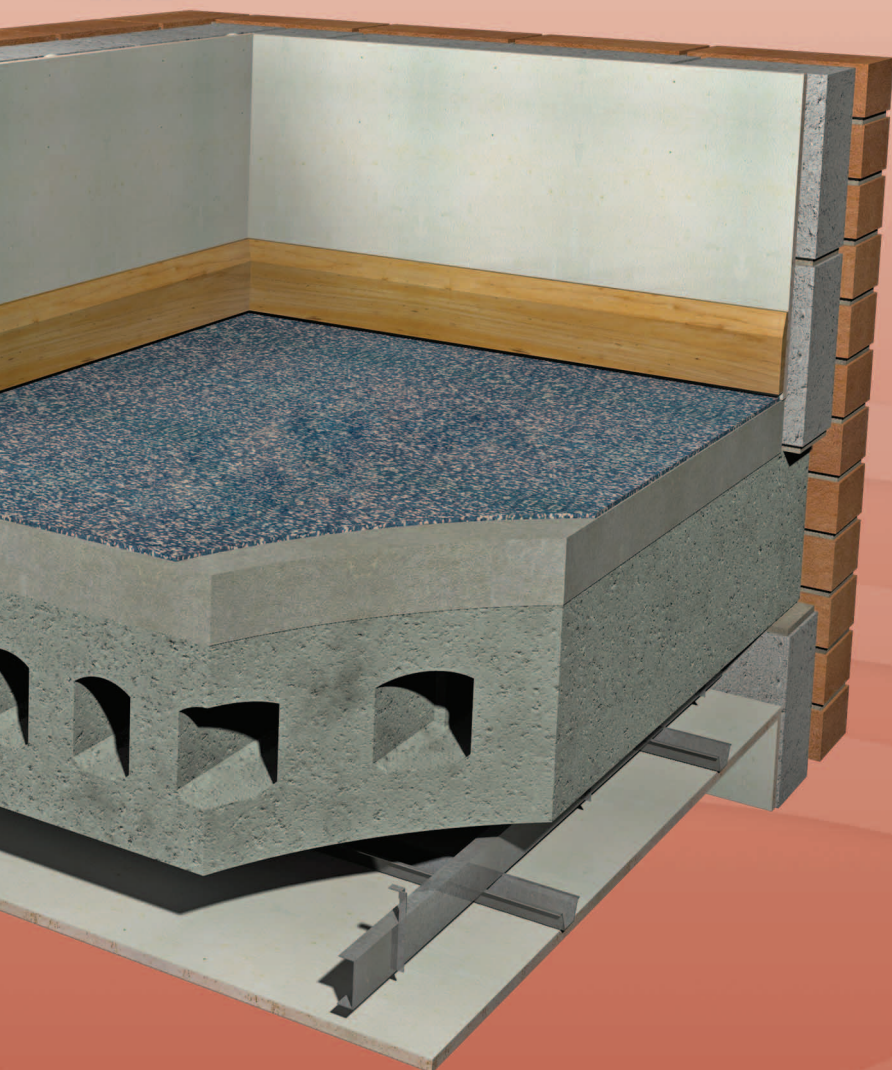


One of the **isomass** systems range

isocheck™

Re-Mat 3 & Re-Mat 5 Systems



IMPACT IMPROVEMENT SYSTEMS FOR CONCRETE FLOORS

- New build
- Conversion
- Refurbishment
- Robust Detail compliant



DESCRIPTION

- ❑ The Re-Mat 3 and Re-Mat 5 systems are designed to reduce impact sound transmission through concrete floor decks and all types of floor finishes.
- ❑ Isocheck Re-Mat 3 consists of a 3.0mm and Re-Mat 5 a 4.5mm layer of matting constructed from waste rubber and cork mixed with a polymer binder to form a resilient mat. Also available is Re-Mat 3T and Re-Mat 5T - a 3mm or 5mm layer suitable for a tile finish.

APPLICATIONS

- ❑ Re-Mat 3 and Re-Mat 5 is suitable for all types of floor finishes including ceramic tiles, stone, marble, vinyl, carpet and solid or laminate wood.
- ❑ A heated floor system can also be installed beneath Re-Mat 3, Re-Mat 5, Re-Mat 3T and Re-Mat 5T.



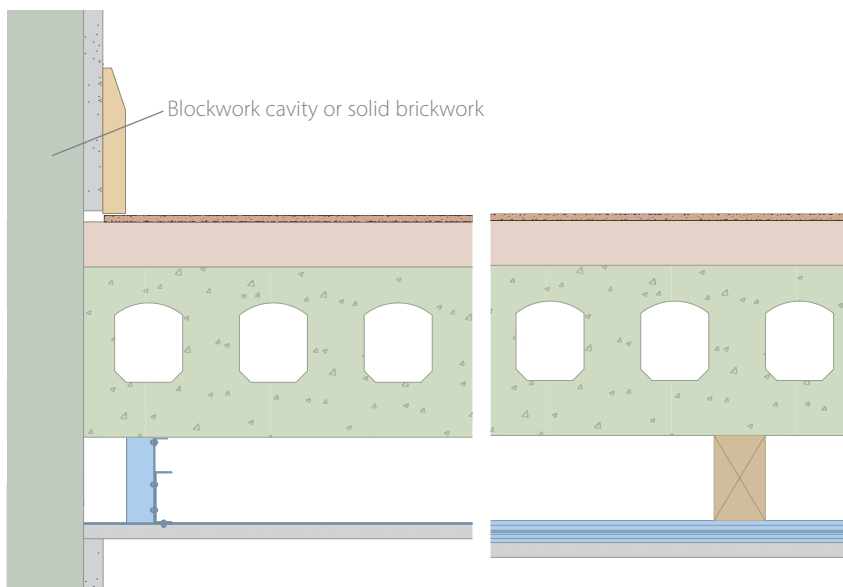
Product data

Roll size:	Re-Mat 3	1m x 15m x 3.0mm
	Re-Mat 5	1m x 15m x 4.5mm
	Re-Mat 3T	1m x 20m x 3.0mm
	Re-Mat 5T	1m x 20m x 5.0mm
Colour:	Black or Beige	
Density:	15m ² rolls	600kg/m ³
	20m ² rolls	700kg/m ³

Performance

Laboratory performance achieved **17dB** ΔLw for Re-Mat 3 and **18dB** ΔLw for Re-Mat 5. Re-Mat 3T can achieve **18dB** ΔLw and Re-Mat 5T can achieve **21dB** ΔLw when used beneath a tiled floor.

Treated floor can meet with the Robust Detail options A & B within E-FC-8, when used in conjunction with isopoli 5mm underscreed layer.



- ❑ Isocheck Re-Mat 3 or Re-Mat 5 bonded to structural sub-floor.
- ❑ ≥300kg/m² hollow core concrete planks with 80kg/m² sand/cement screed or 40mm proprietary screed.
- ❑ 75mm void formed by metal frame suspended ceiling system and ≥10kg/m² gypsum board ceiling **or**
- ❑ 50 x 75mm timber battens.
- ❑ ≥10kg/m² gypsum board ceiling 75mm below underside of sub-floor supported by resilient bars at 400mm centres perpendicular to the battens.

Every effort has been taken in the preparation of this sheet to ensure the accuracy of representations contained herein. Recommendations as to the use of materials, construction details and methods of installation are given in good faith and relate to typical situations. However, every site has different characteristics and reliance should not be placed upon the foregoing recommendations. Advice can be given as to specific applications of the products, upon request to isomass building products.

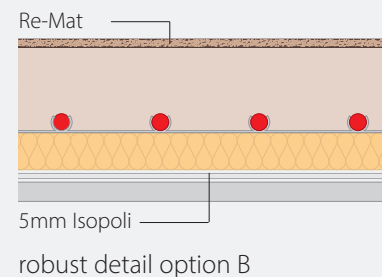
SPECIFICATION

The acoustic floor shall be:

- ❑ Isocheck Re-Mat 3, Re-Mat 5, Re-Mat 3T or Re-Mat 5T system, supplied by Isomass Ltd. Unit 14 Papworth Business Park, Stirling Way, Papworth Everard, Cambridgeshire CB23 3GY and installed in accordance with manufacturer's instructions / recommendations.

INSTALLATION

- ❑ Bond Isocheck Re-Mat over the entire level screed with all joints butted.
- ❑ Re-Mat 3 and Re-Mat 5 systems are two of a number of acoustic floor solutions that could complement the requirement for underfloor heating.



- ❑ Full installation instructions are available and must be used in conjunction when laying this floor system.