

Technical Datasheet: 10 mm

Description

Cemgold is a 100% asbestos free fibre cement board. Made from a homogeneous Portland cement and high purity silica sand with reinforcing fibre known as cellulose or pulp added in versatile doses using the latest technology of pressing and autoclave processes.

Cemgold is a very strong and durable board with superior physical and mechanical properties, Cemgold also offers fantastic racking performance tested with Lucideon in Stoke on Trent making it the ideal board for timber frame construction and off site construction.

Boards Size and weight

Standard Board Size **1200mm x 2400mm x 10mm**

Weight per board **38kg (13.20kg / m²)**

Physical & Chemical Properties

		STANDARD
Density	1300kg/m ³	BS EN 12467
Water absorption	< 35%	BS EN 12467
Water tightness	Pass	BS EN 12467
Moisture movement	0.06% to 0.11%	BS EN 12467
Moisture Content	5% to 10%	BS EN 12467
Thermal Conductivity	0.15W/m.K	BS EN 12467
Warm water resistance	Pass	BS EN 12467
Heat rain resistance	Pass	BS EN 12467
Freeze / Thaw Resistance	Pass	BS EN 12467
Soak dry test (25 cycle)	Pass	BS EN 12467
Ph Value	7 to 10	BS EN 12467
STC Value	30 - 64 db	BS EN 12467
Screw withdrawal	1350 N ±50	BS EN 12467
Racking	1.7kN/m (12.5mm Testing carried out by lucideon)	BS EN 594

Fire Performance

BS EN 476 (PARTS 6&7)	Class O
EN13501	A1 (Non-Combustible)
LGS Partition Wall	60 Minutes 12.5mm test

A suitable PCD blade is recommended for cutting Cemgold available from all tool manufacturers Including DeWalt, Trend & Dart



Approved by



Applications

- Timber frame
- Offsite construction
- Wet areas
- Façade
- Render
- Rainscreen
- Soffits
- Eaves lining
- Sign boards
- Drylining

Liability

The information given is correct to the best of our knowledge at the time of publication but without guarantee of accuracy. We do not accept any responsibility for damage and claims arising from handling, transport, storage or disposal of the product. This data sheet applies only to the product named above supplied by IPP. If the product is used as part of other products, information given in the data sheet may be invalidated. E&OE

No warranty is hereby expressed or implied.

Boards Available in 10, 12 & 18mm

Timber frame | Offsite construction | Wet areas | Façade | Render | Rainscreen | Soffits | Eaves lining | Sign boards | Drylining

www.intpetro.com | 01621 776252 | sales@intpetro.com

Bradwell Hall, Bradwell-on-Sea, Southminster, CM0 7HX



Technical Datasheet: 12.5 mm

Description

Cemgold is a 100% asbestos free fibre cement board. Made from a homogeneous Portland cement and high purity silica sand with reinforcing fibre known as cellulose or pulp added in versatile doses using the latest technology of pressing and autoclave processes.

Cemgold is a very strong and durable board with superior physical and mechanical properties, Cemgold also offers fantastic racking performance tested with Lucideon in Stoke on Trent making it the ideal board for timber frame construction and off site construction.

Boards Size and weight

Standard Board Size **2400mm x 1200mm 12.5mm**

Weight per board **45kg (15.62kg / m²)**

Physical & Chemical Properties

		STANDARD
Density	1300kg/m ³	BS EN 12467
Water absorption	< 35%	BS EN 12467
Water tightness	Pass	BS EN 12467
Moisture movement	0.06% to 0.11%	BS EN 12467
Moisture Content	5% to 10%	BS EN 12467
Thermal Conductivity	0.15W/m.K	BS EN 12467
Warm water resistance	Pass	BS EN 12467
Heat rain resistance	Pass	BS EN 12467
Freeze / Thaw Resistance	Pass	BS EN 12467
Soak dry test (25 cycle)	Pass	BS EN 12467
Ph Value	7 to 10	BS EN 12467
STC Value	30 - 64 db	BS EN 12467
Screw withdrawal	1350 N ±50	BS EN 12467
Racking	1.7kN/m (Testing carried out by lucideon)	BS EN 594

Fire Performance

BS EN 476 (PARTS 6&7)	Class O
EN13501	A1 (Non-Combustible)
LGS Partition Wall	60 Minutes

A suitable PCD blade is recommended for cutting Cemgold available from all tool manufacturers Including DeWalt, Trend & Dart



Approved by



Applications

- Timber frame
- Offsite construction
- Wet areas
- Façade
- Render
- Rainscreen
- Soffits
- Eaves lining
- Sign boards
- Drylining

Liability

The information given is correct to the best of our knowledge at the time of publication but without guarantee of accuracy. We do not accept any responsibility for damage and claims arising from handling, transport, storage or disposal of the product. This data sheet applies only to the product named above supplied by IPP. If the product is used as part of other products, information given in the data sheet may be invalidated. E&OE

No warranty is hereby expressed or implied.

Boards Available in 10, 12 & 18mm

Timber frame | Offsite construction | Wet areas | Façade | Render | Rainscreen | Soffits | Eaves lining | Sign boards | Drylining

www.intpetro.com | 01621 776252 | sales@intpetro.com

Bradwell Hall, Bradwell-on-Sea, Southminster, CM0 7HX

Technical Datasheet: 18 mm

Description

Cemgold is a 100% asbestos free fibre cement board. Made from a homogeneous Portland cement and high purity silica sand with reinforcing fibre known as cellulose or pulp added in versatile doses using the latest technology of pressing and autoclave processes.

Cemgold is a very strong and durable board with superior physical and mechanical properties, Cemgold also offers fantastic racking performance tested with Lucideon in Stoke on Trent making it the ideal board for timber frame construction and off site construction.

Boards Size and weight

Standard Board Size **1200mm x 2400mm x 18mm**

Weight per board **67kg (23.26kg / m²)**

Physical & Chemical Properties

		STANDARD
Density	1300kg/m ³	BS EN 12467
Water absorption	< 35%	BS EN 12467
Water tightness	Pass	BS EN 12467
Moisture movement	0.06% to 0.11%	BS EN 12467
Moisture Content	5% to 10%	BS EN 12467
Thermal Conductivity	0.15W/m.K	BS EN 12467
Warm water resistance	Pass	BS EN 12467
Heat rain resistance	Pass	BS EN 12467
Freeze / Thaw Resistance	Pass	BS EN 12467
Soak dry test (25 cycle)	Pass	BS EN 12467
Ph Value	7 to 10	BS EN 12467
STC Value	30 - 64 db	BS EN 12467
Screw withdrawal	1350 N ±50	BS EN 12467
Racking	1.7kN/m (12.5mm Testing carried out by lucideon)	BS EN 594

Fire Performance

BS EN 476 (PARTS 6&7)	Class O
EN13501	A1 (Non-Combustible)
LGS Partition Wall	60 Minutes 12.5mm test

A suitable PCD blade is recommended for cutting Cemgold available from all tool manufacturers Including DeWalt, Trend & Dart



Approved by



Applications

- Timber frame
- Offsite construction
- Wet areas
- Façade
- Render
- Rainscreen
- Soffits
- Eaves lining
- Sign boards
- Drylining

Liability

The information given is correct to the best of our knowledge at the time of publication but without guarantee of accuracy. We do not accept any responsibility for damage and claims arising from handling, transport, storage or disposal of the product. This data sheet applies only to the product named above supplied by IPP. If the product is used as part of other products, information given in the data sheet may be invalidated. E&OE

No warranty is hereby expressed or implied.

Boards Available in 10, 12 & 18mm

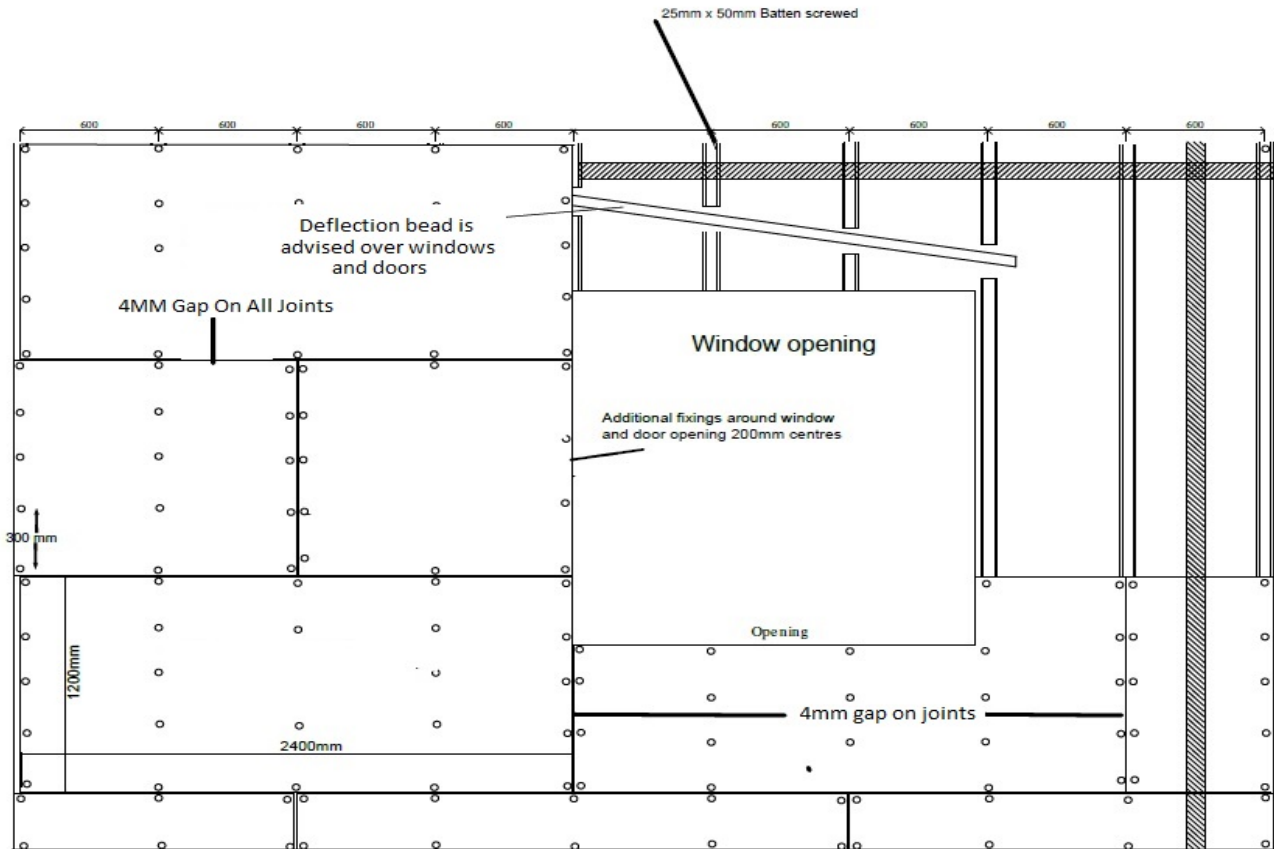
Timber frame | Offsite construction | Wet areas | Façade | Render | Rainscreen | Soffits | Eaves lining | Sign boards | Drylining

www.intpetro.com | 01621 776252 | sales@intpetro.com

Bradwell Hall, Bradwell-on-Sea, Southminster, CM0 7HX

CEM GOLD

CEMGOLD FITTING GUIDANCE



Fixings should always be minimum 10mm in from the board edge



* This Document Is For Guidance Only Professional Advice Should Be Taken And Always Work To The Render Manufacturers Instructions *

Rainscreen Cladding | Steel Frame Systems | Modular Build | SIP Panels



FIRE RESISTANT



HIGH IMPACT STRENGTH



WEATHER RESISTANT



STRONG AND EASY TO USE



MOISTURE PROTECTION



ACOUSTIC REDUCTION



LIGHT STEEL FRAME ASSOCIATION
SUPPLY CHAIN MEMBER



STRUCTURAL TIMBER ASSOCIATION
Member

building products
ipp

CEM GOLD

STEEL FRAME RENDER SUBSTRATE



- Steel Frame
- Sheathing Board
- Adhesive
- EPS insulation
- 12.5mm Cemgold Board
- Render Base coat / Mesh
- Render Top coat



* This Document Is For Guidance Only Professional Advise Should Be Taken And Always Work To The Render Manufacturers Instructions *

Rainscreen Cladding | Steel Frame Systems | Modular Build | SIP Panels



**FIRE
RESISTANT**



**HIGH IMPACT
STRENGTH**



**WEATHER
RESISTANT**



**STRONG AND
EASY TO USE**



**MOISTURE
PROTECTION**



**ACOUSTIC
REDUCTION**



**LIGHT STEEL FRAME
ASSOCIATION**
SUPPLY CHAIN MEMBER



**STRUCTURAL
TIMBER ASSOCIATION**
Member

building products
ipp

CEM GOLD

TIMBER FRAME RENDER SUBSTRATE



- Timber Frame
- Sheathing Board
- Breather Membrane
- 12.5mm Cemgold Board
- Manufacturer Recommended Mesh
- Render Basecoat
- Render Topcoat



Key Points

- Airflow must be in place from top to bottom behind the Cemgold board.
- A 4mm gap must be left on all gaps between the boards.
- 42mm minimum ceramic coated or stainless-steel wood screws must be used.
- Boards should be installed in a brickwork style either vertical or horizontal.



* This Document Is For Guidance Only Professional Advise Should Be Taken And Always Work To The Render Manufacturers Instructions *

Rainscreen Cladding | Steel Frame Systems | Modular Build | SIP Panels



FIRE
RESISTANT



HIGH IMPACT
STRENGTH



WEATHER
RESISTANT



STRONG AND
EASY TO USE



MOISTURE
PROTECTION



ACOUSTIC
REDUCTION



LIGHT STEEL FRAME
ASSOCIATION
SUPPLY CHAIN MEMBER

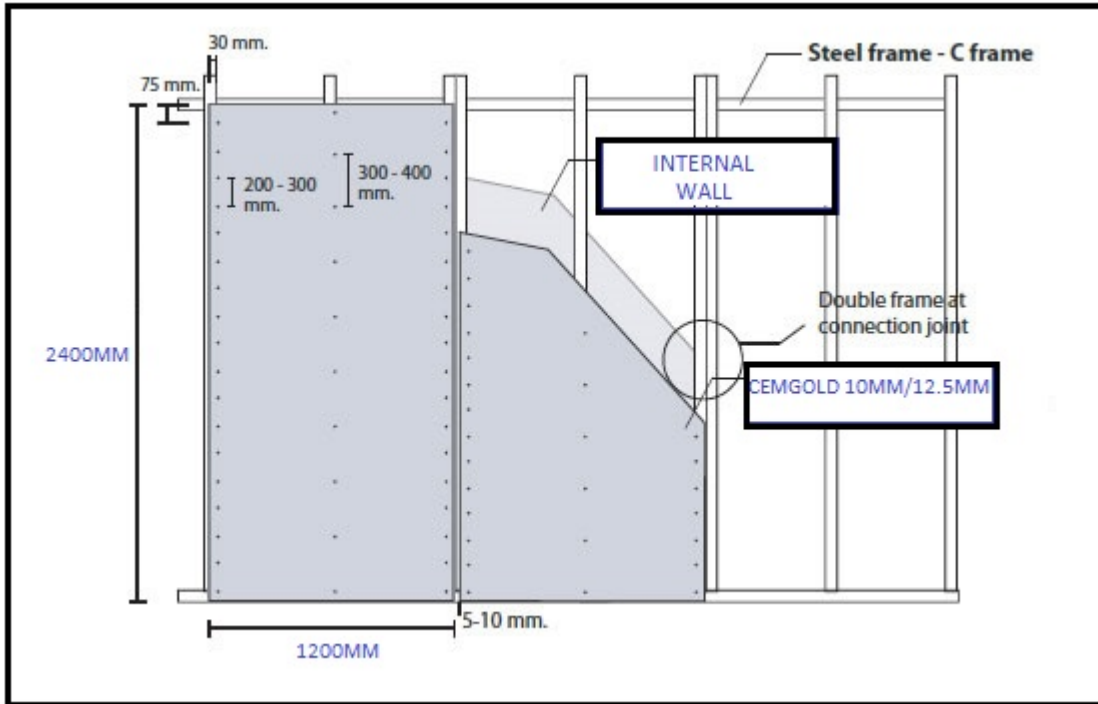


STRUCTURAL
TIMBER ASSOCIATION
Member

building products
ipp

CEM GOLD

CEMGOLD FITTING GUIDANCE



* This Document Is For Guidance Only Professional Advice Should Be Taken And Always Work To The Render Manufacturers Instructions *

Rainscreen Cladding | Steel Frame Systems | Modular Build | SIP Panels



FIRE RESISTANT



HIGH IMPACT STRENGTH



WEATHER RESISTANT



STRONG AND EASY TO USE



MOISTURE PROTECTION



ACOUSTIC REDUCTION



LIGHT STEEL FRAME ASSOCIATION
SUPPLY CHAIN MEMBER



STRUCTURAL TIMBER ASSOCIATION
Member

