



DECKfon[®] 26T

Composite Acoustic Overlay Floorboards for Refurb and Conversion Applications

- ◻ Installation guidelines
- ◻ Proven constructions
- ◻ Technical data sheets
- ◻ Top tips



INSTALLATION GUIDE

Storage of DECKfon® 26T

DECKfon® 26T should be stored on a pallet in dry conditions on a dry, flat and level base.

If you are required to re-stack the 26T, we advise that the boards are stored on a pallet or are fully supported from the underside. Care should be taken not to damage the edges of the board whilst re-stacking.



DECKfon® 26T is supplied on pallets, wrapped in temporary protection. This covering is to offer dust protection and is a temporary measure to protect the boards from the weather during the loading/unloading process, it is **not** a waterproof cover.

DECKfon® 26T is an internal product and should remain dry at all times. If the product is to be temporarily stored outside appropriate measures are required to protect the boards from moisture, such as a suitable waterproof tarpaulin or sheeting.

The stacking of DECKfon® 26T on their edges, should be avoided as this can lead to damage of the tongue and/or groove.

Prior to installation, DECKfon® 26T should be left to acclimatise for 24 hours in the installation space.

Moisture Damage

The chipboard facing of DECKfon® 26T is a P5 moisture resistant chipboard, however, chipboard when wet can swell and will not return to its original shape. Therefore great care must be taken to not allow the boards to become wet.

Should the boards become saturated during storage or in-situ, we strongly advise contacting our technical department to arrange a site survey to review the products suitability.

Attention should be paid to all health & safety regulations. For Safety Data Sheets please contact the technical department.








CELLECTA is constantly reviewing all of its guidance and best practices and therefore reserve the right to alter specifications and guidance at any time and without notice.

The information contained in this document is based on CELLECTA's experience and represents best practices at the time of writing.

Pre-Installation

Before commencing installation, take time to familiarise yourself with the products and installation instructions. To complete the installation you will need the following items:

-  **DECKfon® 26T** boards
-  **CELLECTA fon Adhesive**
-  **YELOfon® FS30** flanking strip
-  Tape measure
-  Hand or circular saw

Sub-Floor Preparation

Prior to installing the **DECKfon® 26T**, ensure that the substrate is level and structurally sound. Any loose floorboards should be secured to the joists with suitable fixings.

Sweep the floors to ensure any building debris to allow the boards to lay flat and fill all potential air paths in the floor deck with a suitable flexible mastic.

Installation of DECKfon® 26T

Starting in the far left hand corner of the room, install packers against both walls and install the first **DECKfon® 26T** (foam side down) with the tongue of the short and long side facing the wall, you **do not** need to remove the tongue of the chipboard.

An expansion gap of 10mm or 2mm per metre run of floor, whichever is greater, should be left against the walls.

TOP TIP - Do not use the YELOfon® FS/ES in place of packers as this is a compressible material.

Run a bead of **CELLECTA fon Adhesive** along the short groove of the **DECKfon® 26T**. Install the second board with the tongue of the short edge placed into the groove of first board. Ensure the joints are flush and there are no gaps between the boards.

At wall abutments, measure the gap from the laid **DECKfon® 26T** to the wall allowing for an expansion gap as detailed above between the wall and the overlay board.

Using a hand or circular saw cut the **DECKfon® 26T** to the required length in a well ventilated area. Ensure suitable PPE is used when cutting the boards in accordance with the Safety Data Sheet, a copy of which can be supplied upon request.

Apply **fon Adhesive** in the groove and install the cut board to complete the row. Ensure there are no gaps between the joints of the board.

Apply a bead of **fon Adhesive** along the long edge of the first board of **DECKfon® 26T**. Ensuring the cut is on the outside, use the off cut of **DECKfon® 26T** to begin the next row. Where possible, it is advised that any off cut should be no less than 200mm in width.

Install the remainder of the **26T** in a brick bond formation ensuring all boards are glued and tightly interlocked. It is important that none of the boards are in contact with any walls or door treatments as this can result in acoustic failure.

Intermediate gaps (min. 10mm) should be incorporated for floors in excess of 10m long (eg. corridors).

Installation of DECKfon® 26T (continued)

Remove the packing shims from around the **DECKfon® 26T** and install **YELOfon® FS30** around all perimeters to isolate the **26T** and stop flanking transmission.

Any soil pipes or services that penetrate the **DECKfon® 26T** should be isolated from the board using **YELOfon® FS30**.

All plasterboard, as well as the skirting boards **must be** isolated from the **DECKfon® 26T** by the **YELOfon® FS30** Strip.

Both load bearing walls and non-load bearing partitions must be built off the concrete floor and not the **DECKfon® 26T**. All walls and partitions must then be isolated from the acoustic treatment with flanking strip.

DECKfon® 26T is a floating floor treatment and therefore does not need to be mechanically fixed to the timber subfloor. Any mechanical fixings penetrating the **26T** may result in acoustic failure.

Once installation is complete, trim back any excess flanking strip with a sharp knife prior to the installation of the floor finishes.

Allow the adhesive to fully cure for up to 48 hours prior to trafficking the floor or installing floor finishes.

Sanitary Ware & Kitchen Units

It is recommended that sanitary ware and kitchen units are built off the sub-floor with the **DECKfon® 26T** dressed up as close as possible to the legs or units. These should not come into contact with the **DECKfon®** boards.

Install any decorative panels such as plinths or bath surrounds to produce a neat finish. Seal any gaps with a flexible mastic.

Floor Finishes

All floor finishes should be installed in line with the manufacturers official guidance and the relevant British Standards.

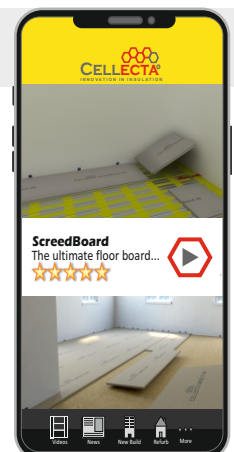
Due to the natural thermal expansion of chipboard based products, a decoupling layer is highly recommended prior to the installation of sensitive floor finishes, such as vinyl or tiles. For more information contact our technical department on 01634 296677.

Need more installation help on site?

FREE services offered by **CELLECTA**:

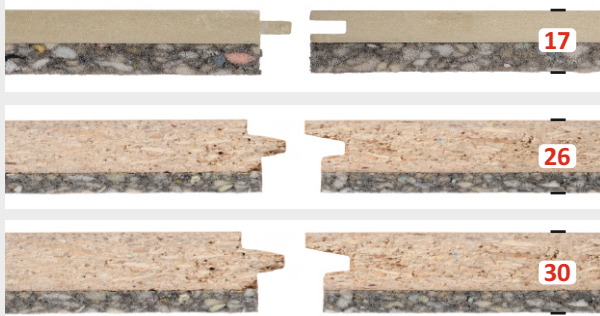
- Technical and installation advice
- Architectural drawings and NBS specs
- U-value and imposed load calculations
- Site surveys and take-off service
- Arrange acoustic testing
- Present RIBA certified CPD's

For on the go access to information, including installation videos & technical data, download the **CELLECTA** app for smart phones and tablet devices.



DECKfon® 17T, 26T & 30T

Composite Acoustic Overlay Floorboards for Refurb and Conversion Applications



Product Information

DECKfon® composite overlays are the ideal acoustic treatment to improve the performance of an existing structural timber decked floor. All three treatments combine a tongue and groove timber floorboard with a low resonance, flexible resilient foam.

Product Benefits

- Excellent acoustic performance
- Three thickness' available: 17, 26 & 30mm
- Moisture resistant T & G floorboard
- Recycled resilient layer
- Quick and easy to install

Technical Data

		DECKfon®		
		17T	26T	30T
Product description	-	Acoustic overlay floorboard	Acoustic overlay floorboard	Acoustic overlay floorboard
Overall thickness	mm	17	26	30
Type of facing board	-	9mm MR MDF	18mm P5 Chipboard	22mm P5 Chipboard
Resilient layer	-	8mm open-cell PU foam	8mm open-cell PU foam	8mm open-cell PU foam
Board dimensions	mm	600 x 2400	600 x 2400	600 x 2400
Weight	kg/m ² kg/board	7.25 10.44	13.80 19.87	16.00 23.04
Associated flanking strip required	-	YELOfon ES5/60	YELOfon FS30	YELOfon FS30

Third Party Accreditation and Approvals



Environmental Credentials



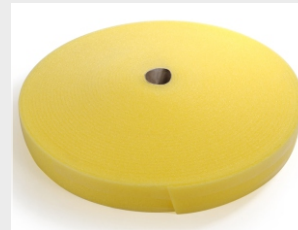
YELOfon® Perimeter Edge Strips

5mm thick, non-cross-linked, closed-cell polyethylene foam rolls



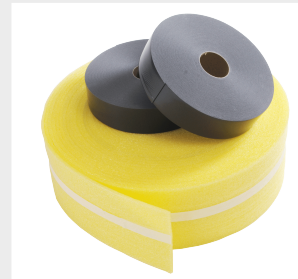
Product reference	Dimensions
ES5/15	5mm x 15mm x 50m
ES5/60	5mm x 60mm x 50m
ES5/100	5mm x 100mm x 50m
ES5/120	5mm x 120mm x 50m
ES5/150	5mm x 150mm x 50m

10mm thick, non-cross-linked, closed-cell polyethylene foam rolls



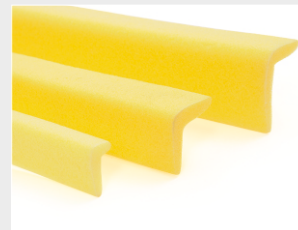
Product reference	Dimensions
ES10/100	10mm x 100mm x 50m
ES10/120	10mm x 120mm x 50m
ES10/150	10mm x 150mm x 50m

7mm thick, non-cross-linked, closed-cell polyethylene foam, with Surebond facing, folding flaps and self adhesive backing and jointing tape for HD10+ rolls



Product reference	Dimensions
HD10+ Combi pack + 1 rolls E-strip + 2 rolls J-strip	E-strip: 7mm x 200mm x 33.33m J-strip: 2.5mm x 75mm x 40m

6mm thick, non-cross linked, closed-cell polyethylene, "L" profiled perimeter flanking strips



Product reference	Dimensions
FS15	15mm x 30mm x 6mm x 2m
FS30	30mm x 30mm x 6mm x 2m
FS50	50mm x 30mm x 6mm x 2m

CELLECTA fon Adhesive: Modified yellow PVA



Bottle size	1kg
Typical coverage	33m ²
Curing time	24 hours
Application	Bonding timber treatments T&G edges